

DATE OF CUSTOMER'S ORDER 12 10 48  
ORDER ENTERED 12 21 48  
TELEPHONE: SUPERIOR 0377

C. J. ANDERSON & CO., Inc.  
ELEVATOR CONTROLLERS and ACCESSORIES  
ELECTRIC CONTROL APPARATUS  
212-222 W. Hubbard St., CHICAGO 10, ILL.

ORDER NUMBER  
**60431**  
PLEASE USE THIS NUMBER  
ON ALL CORRESPONDENCE

SOLD TO National Lacquer & Paint Co., Inc. AGENCY NUMBER  
7415-39 So. Green St., Chicago 21, Ill CUSTOMER'S NUMBER Letter  
SHIP TO Above VIA G & B Cartage  
TERMS Check w/order F. O. B. CHICAGO

NAME OF BUILDING  
ELEVATOR Freight POUNDS AT F. P. M. TYPE T.H.  
VOLTAGE 220 A. 3 PHASE 60 CYCLES WIRE  
MOTOR 10 H. P. R. P. M. 3 LEADS TYPE  
~~REVERSE~~ ~~LEFT~~ ~~RIGHT~~ ~~CUT OUT~~ ~~START~~ SQUIRREL CAGE

Quantity	Bulletin	TYPE	DESCRIPTION	SPECIFICATION
1	X-333	DR	CONTROLLER Across-the-line type H D P B OPERATION	333-H-50
1	681	RP-2	Reverse Phase Relay Mtd.	
1	X-481	VE-1	Non-interference Relay Mtd.	
			Above to replace Controller Ser. #54552.	
			FLOOR RELAYS MARKED	
			FLOOR SELECTOR SPEED	LANDINGS
			EXTENSION DRIVE	GEARS
			POLE TRANSFER SWITCH	
			CAR SWITCH INSERT PLATE	FINISH NO.
			HOISTWAY LIMIT SWITCH	
			HOISTWAY JUNCTION BOX	STUDS
			FLOOR SWITCH	
			PUSH BUTTON STATION	LANDINGS—FINISH NO.
			MARKED	
			PUSH BUTTON STA.	V. LAMP—FINISH NO.
			PUSH BUTTON STA.	V. LAMP—FINISH NO.
			DOOR INTERLOCK	R. H.—L. H.
			DOOR INTERLOCK	R. H.—L. H.
			GATE INTERLOCK	R. H.—L. H.
			GATE INTERLOCK	R. H.—L. H.
			RETIRING CAM	R. H.—L. H. MTG.
			BRAKE MAGNET	

SAMPLE  
SN #60431  
SPEC: 333-H-50  
IND: 881-H & 881-H-SL

SHIPMENT WANTED  
" PROMISED 12 29 48  
CONTROLLER ORDER NO. A 269  
FLOOR SELECTOR ORDER NO. A  
ACCESSORY ORDER NO.

SHIPPED 12-31-48  
BILLED 12-31-48

SERIAL NUMBER  
**60431**  
USE ONLY FOR NAME PLATE

10300

### ENGINEERING INFORMATION

Order Received \_\_\_\_\_

Order Entered \_\_\_\_\_

Order Acknowledged \_\_\_\_\_

Wrote for Information \_\_\_\_\_

Information Received \_\_\_\_\_ Complete \_\_\_\_\_

Motor Information Received \_\_\_\_\_

Layout Information Received \_\_\_\_\_

Wiring Diagram No. 881-H.

Wiring Diagram Sent to Customer 3012-21-48

Wiring Diagram Sent to Shop 12-21-48

Floor Selector Data Sent to Shop \_\_\_\_\_

Complete Information Sent to Shop 12-21-48

1. What type of Door Interlocks will be used? single contact

2. Will Retiring Cam be used? \_\_\_\_\_ Motor Solenoid

Must Cam be Retired before Door Circuit is Closed \_\_\_\_\_

3. Will Power Gate Opener be used? \_\_\_\_\_

Type and Operation? \_\_\_\_\_

4. What Type of Brake Magnet will be used?

(a) Single Phase

(b) Polyphase

(c) Motor Operated \_\_\_\_\_ One or Two Directions

(d) Direct Current

5. Operating Current and Voltage on A. C. Controller?

A. C. D.C. 220 Volts Step Down Transformer

If D. C., is current supplied from:

(a) Motor-Generator Set

(b) Dry Rectifier

(c) Tube Rectifier

6. What is voltage of "In Use" Lights? \_\_\_\_\_

What is capacity of "In Use" Lights? \_\_\_\_\_ at \_\_\_\_\_ Watts each

Total \_\_\_\_\_ Watts

**SAMPLE**  
**SN#60431**  
**SPEC: 333-H-50**  
**WD: 881-H & 881-H-SL**

Date: 1-7-37

SPECIFICATION SHEET NO. 333-H-50

2-SHEETS

PART LIST ASSEMBLY NO.

SHEET NO. 1

Sup. Sheet No. \_\_\_\_\_

Date \_\_\_\_\_

Sup. By Sheet No. \_\_\_\_\_

Date \_\_\_\_\_

## TYPE OF CONTROL

Bulletin No. X-333

A.C. Type "DR" Single Speed Control-Across-the-line Type

5 H.P. - 220 Volts-3 Phase-60 cycles

Motor-Single Speed High Torque Squirrel Cage-3 Leads

W.D. NO. 881-H - Date: 12-17-35 - S.L. Dia. No. 881-H-SL - Date: 12-17-35

## CONTROL PANEL

1-18"x24"x3/4"-Ebony ~~Panel~~ Panel-1/8" Bevel-Black Duco Finish

## MOUNTING FRAMES

Type "R" Frames for Mounting - Drawing No. 432

Uprights - 34" High - 1 1/2"x1 1/2"x3/16" Angle Iron

## APPARATUS &amp; COIL WINDING DATA

(A &amp; B)

## UP-DOWN DIRECTION SWITCHES

2-A.C. Type "DR-1" - 2 Pole Magnet Switches with Blowout Coils. Main Carbon Contacts-1" Square. Switches mechanically interlocked.

## AUXILIARY CONTACTS

1-1/2" normally open and 2-1/2" normally closed contacts on each switch.

4-Blowout Coils - #8 D.C.C. Wire - Spool Wound - 24 Turns.

2-Type "DR-1" Coils - #25 Enamel Wire - Form Wound - 1400 Turns.

## POTENTIAL SWITCH

1-A.C. Type "DR-1" - 2 Pole Magnet Switch with Blowout Coils. Main Carbon Contacts-1" Square.

2-Blowout Coils - #8 D.C.C. Wire - Spool Wound - 24 Turns.

1-Type "DR-1" Coil - #25 Enamel Wire - Form Wound - 1400 Turns.

(R)

## NO INTERFERENCE RELAY

1-A.C. Type "TE-1" Time Element Relay - Assembly Drawing No. 48000

Provided with 1-normally closed contact - Quick Opening - Slow Closing.

## COIL

1-Type "CR" Coil - #28 Enamel Wire - Form Wound - 2000 Turns.

(S)

## REVERSE PHASE RELAY

1-C. J. A. &amp; Co. Type "RP-2" Reverse Phase Relay Mtd.-220 Volts-3 Ph.-60 cy.

(OF)

## OPERATING CIRCUIT FUSES

2-10 Ampere - 250 Volt N.E.C. Cartridge Type Fuses

Mounted open on front of panel with clips.

## RESISTANCE UNITS

U.S.R. - 1 - #34148 Resistance Tube - #32 Cupron Wire  
D.S.R. - 1 - " " " - #32 " "  
P.S.R. - 1 - " " " - #32 " "

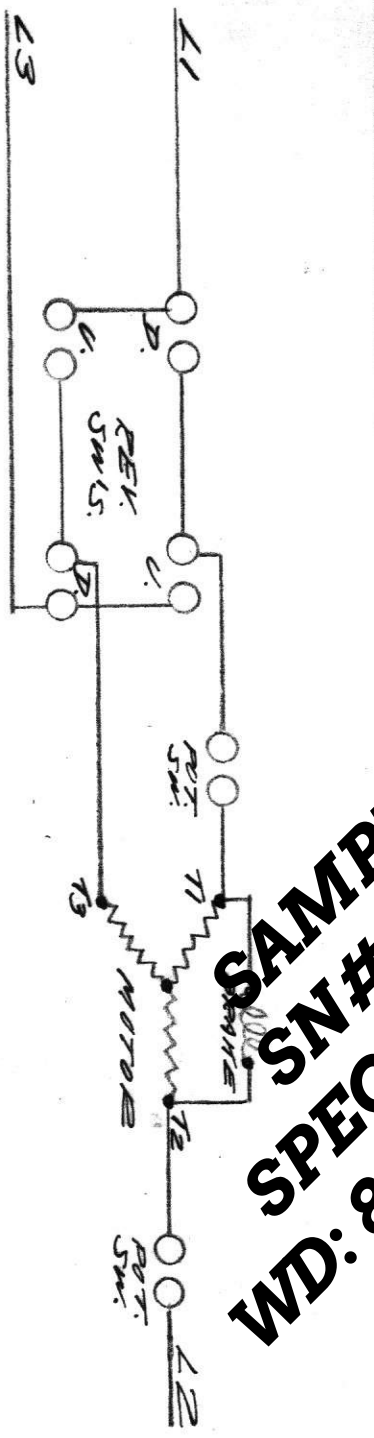
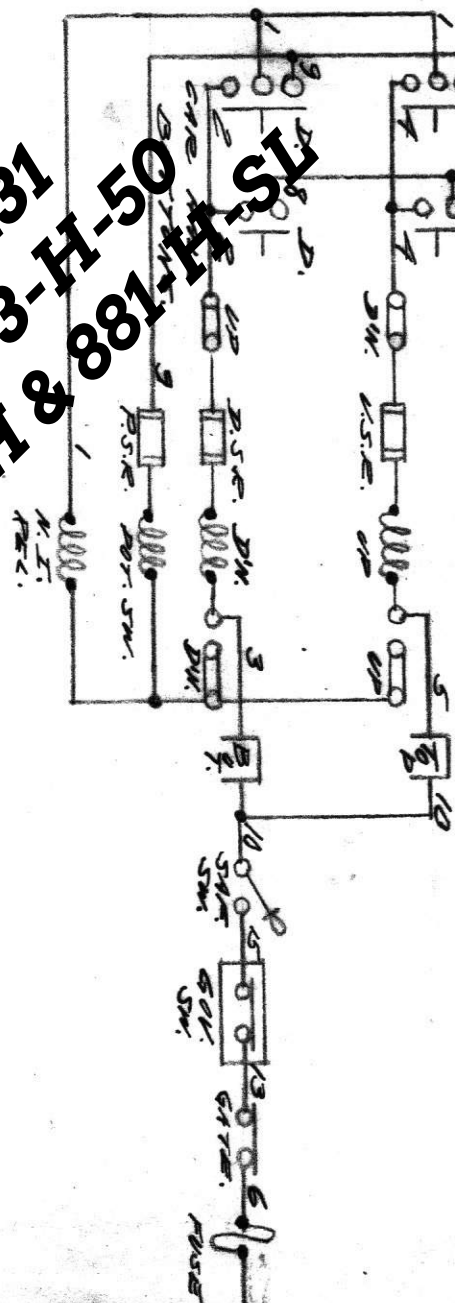
Tubes adjusted for switches to operate on 220 Volts - 60 cycles.

## WIRING

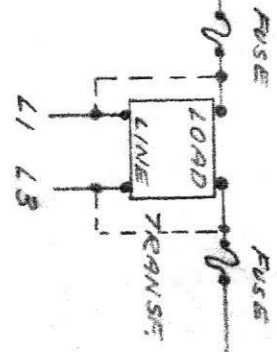
Power Circuits - #8 B & S.G. Underwriters Wire  
Operating " - #14 " " " Rubber Covered Wire  
Power Circuit Terminal Lugs - Size No.1

**SAMPLE**  
**SN#60431**  
**SPEC: 333-H-50**  
**WD: 881-H & 881-H-SL**

NO. 881-1152

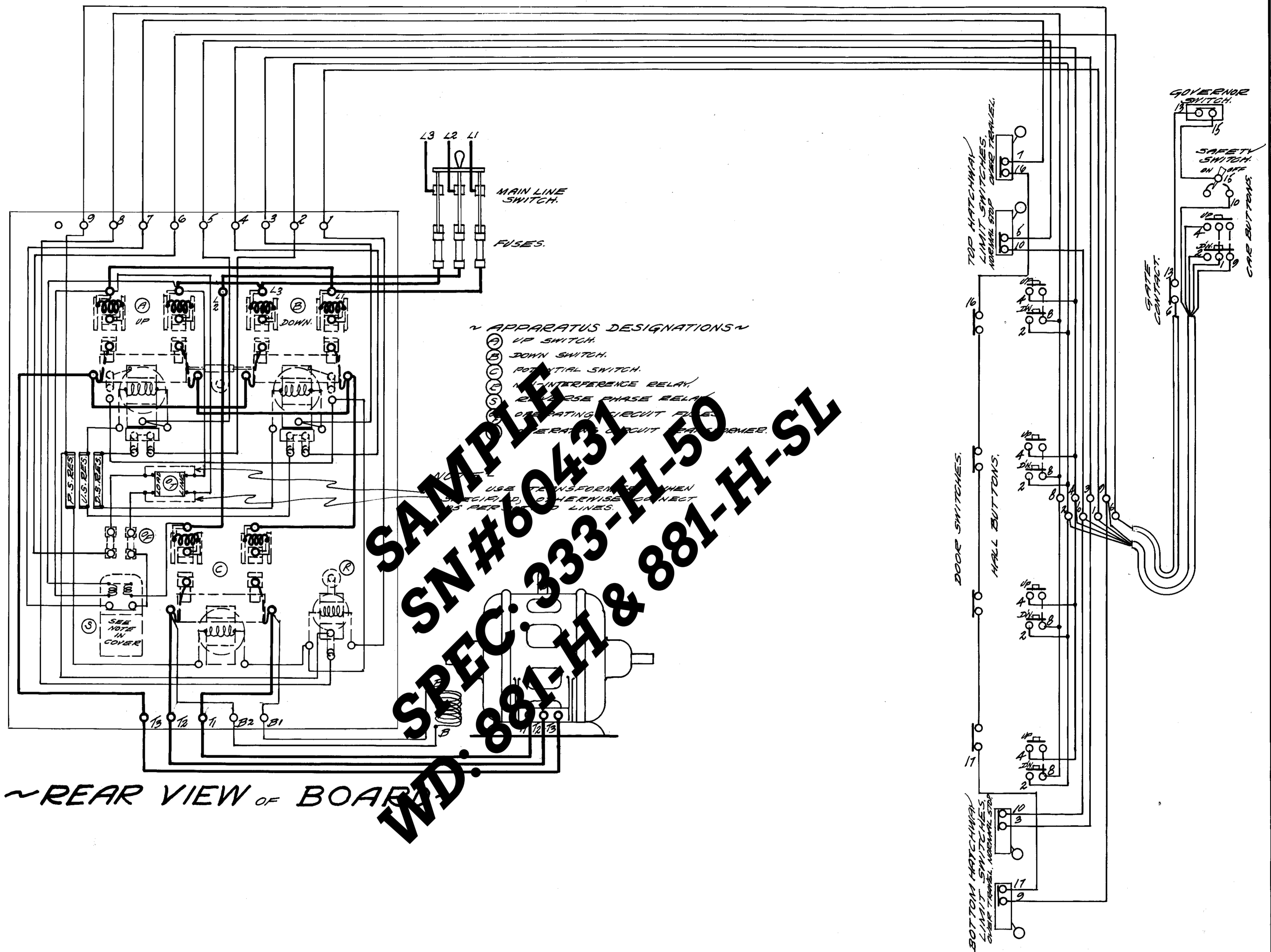


**SAMPLE**  
**SN# 60431**  
**SPEC: 333-H-50**  
**WD: 881-H & 881-H-51**



NAME SCHEMATIC OF T. C. SINGLE SPOD, W.P. 703, CENTER WITH PER. DR. 802. 8.M. 5. 703			
PART NO.	DRAWN BY	DATE	CH BY
E12	5-2-54	7-1-54	J.K.
MATERIAL	FINISH	FOOTS	SCALE

SN# 60431



SAMPLE  
 SN# 60431  
 SPEC. 333-H-50  
 WD. 881-H & 881-H-SL

REVISION: - PROVISIONS FOR OT ADDED: - 2-9-43

N <sup>o</sup> 881-H.	DR. BY: - G.C.M.	DATE: -
	CH. BY: -	12-17-35
	APPD: -	

CJA SN# 60431